



# deco**stone**



*Collection*



**2012**



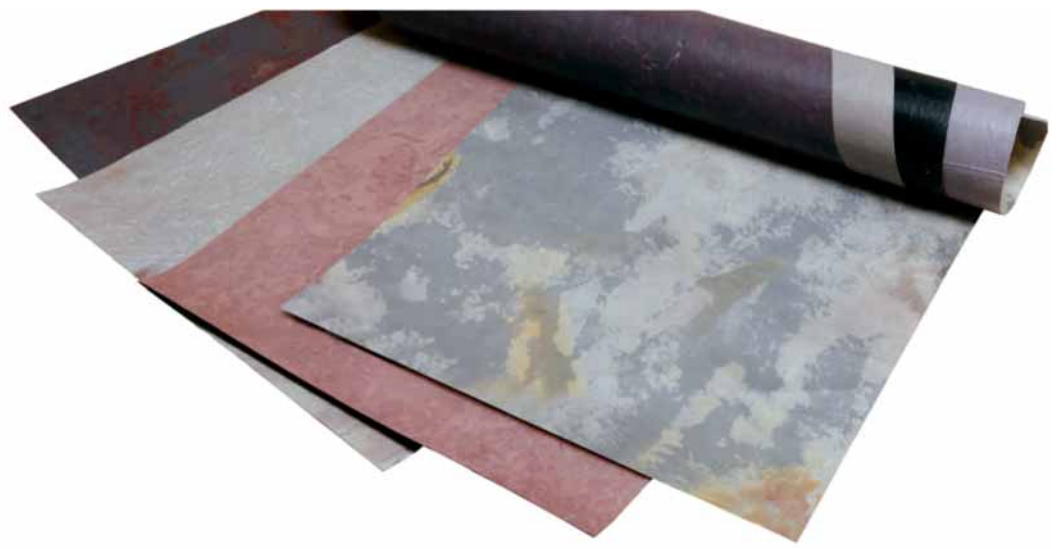
*Decolan*  
QUALITY DECORATIVE SURFACES







**Light**  
**Flexible**  
**Durable**  
**Versatile**  
**Ultra-thin**  
**Water Stable**  
**Eco Efficient**  
**Fire Retardant**



## Introduction

Decostone is a Pure Natural Product. A unique creation of mother nature.

Every Decostone sheet is different in characteristic like texture, colour and looks. Decostone is the first stone a woodworker can process. Decostone is a real stone from split slate rock. The veneers are split in thickness of 0.1-2.0 mm from big stone slabs. Polyester resin & glassfiber are applied on backside to hold the sheet together. The rough split surface, the chancing colors, the vivid patterns & unique textures all combined make each sheet a feast to the eyes & dreams.

Decostone can be applied to the furnitures, interior & exterior walls, vehicle, ship, trade show exhibits, picture frames, fountains, water bodies, planters, gate, flat TV panel backgrounds, electrical outlets etc. The customer is suggested to have a look at complete sheet in order to get the feel of the product better. Samples are not true representation of larger profiles of God's design creation. All sample photo are for indication only & correspond to an A4 size of original Decostone sheets being supplied. Go ahead. Let your fantasy play. No limits.

Decostone has been tested as a covering veneer in many different environments, proving to be a superb material where a lightweight real stone finish is desired & heavy solid stone may not be practical. Huge range of colours available in the Decostone is a time and labour saving product that does not require all of the standard masonry tools or methods.

Decostone is available in flooring & kitchen counter top applications in our different grade. You may use in countertops by putting glass, acrylic or such other transparent materials or ask for a special grade.



**decostone** *the experience*



**Variables available (Picture of full sheet)**

NSV 919 argento



NSV 910 arkobalento colore



NSV 924 auro

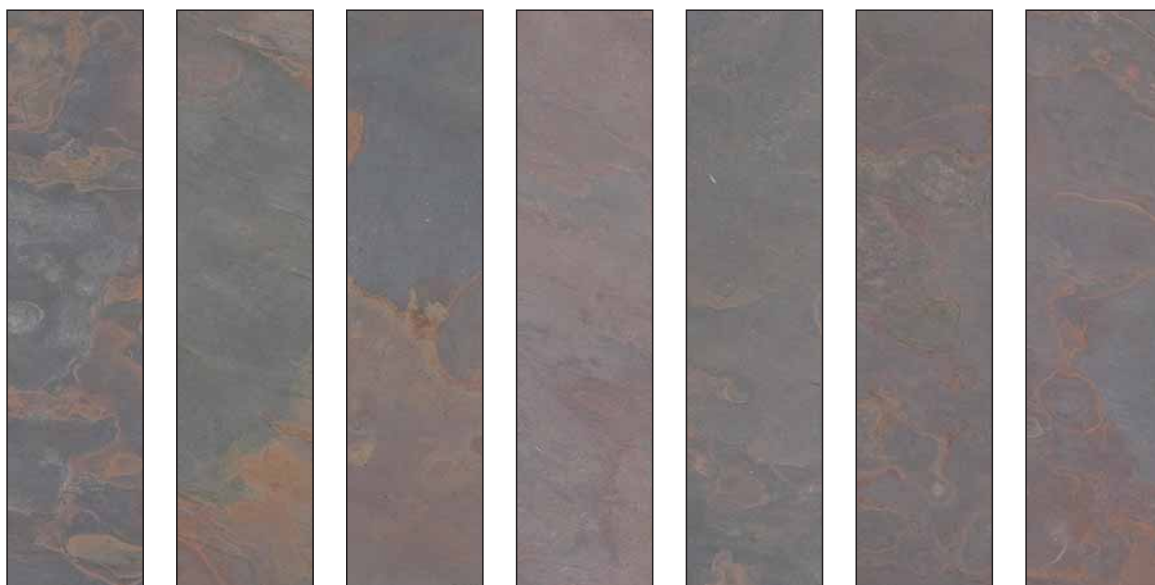




NSV 919 argento



NSV 910 arkobalento colore



NSV 924 auro



**Any Natural Graduation**

blanco **NEW**



NSV 902 - NSV 920 cobre



NSV 916 cobre new



**Variables available (Picture of full sheet)**



blanco **NEW**



NSV 902 - NSV 920 cobre



NSV 916 cobre new



**Any Natural Graduation**

NSV 915 d.black



falling leaves **NEW**



NSV 925 galaxy black



Variables available (Picture of full sheet)



NSV 915 d.black



falling leaves **NEW**



NSV 925 galaxy black



**Any Natural Graduation**



NSV 905 negro



NSV 912 rustique



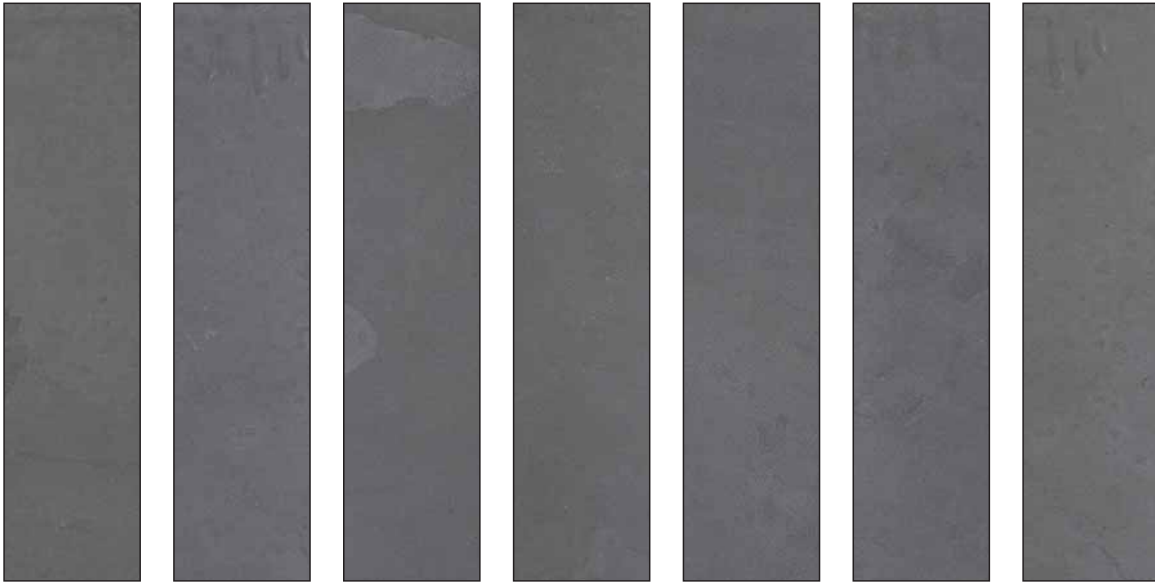
NSV 913 sea green



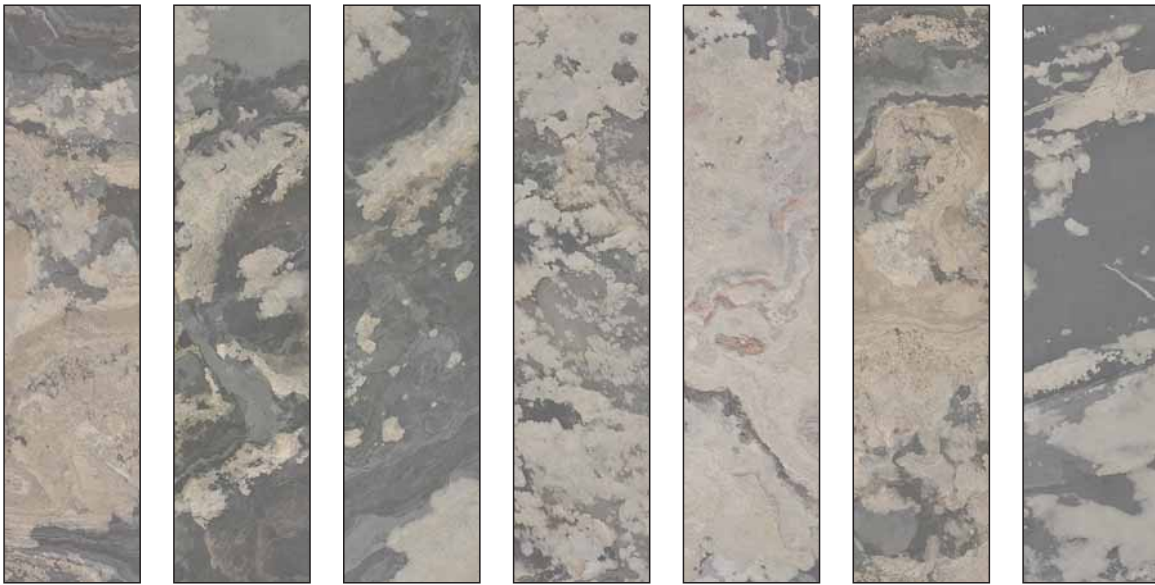
**Variables available (Picture of full sheet)**



NSV 905 negro



NSV 912 rustique



NSV 913 sea green



**Any Natural Graduation**



tan **NEW**



NSV 911 terra rosso



NSV 904 verde



**Variables available (Picture of full sheet)**



tan **NEW**



NSV 911 terra rosso



NSV 904 verde



**Any Natural Graduation**

NSV 908 verde gris



burning forest copper (only on request)



silver grey (only on request)



**Variables available (Picture of full sheet)**



NSV 908 verde gris



burning forest copper (only on request)



silver grey (only on request)



**Any Natural Graduation**

NSV 910 arkobalento colore

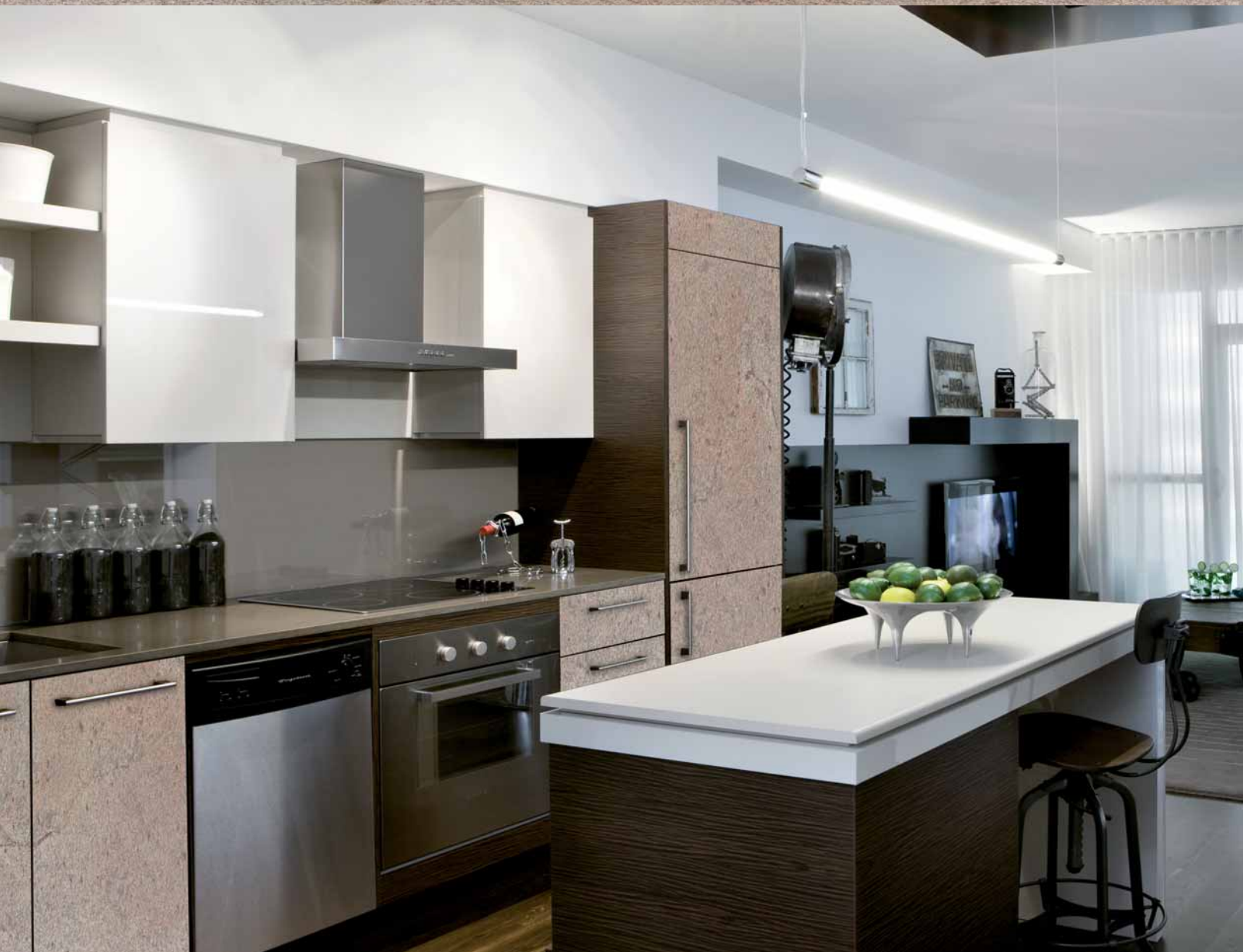


## endless possibilities

There is no doubt that our Decostone is by the most extensive in our stone range. Each stone and its finish have been carefully chosen to give you as much choice as possible.



NSV 924 auro



## contemporary living

It's amazing how well Decostone harmonizes with today's high-tec environment. No longer confined by convention to just the kitchen and conservatory, natural surface can add that extra chic to just about any modern setting.

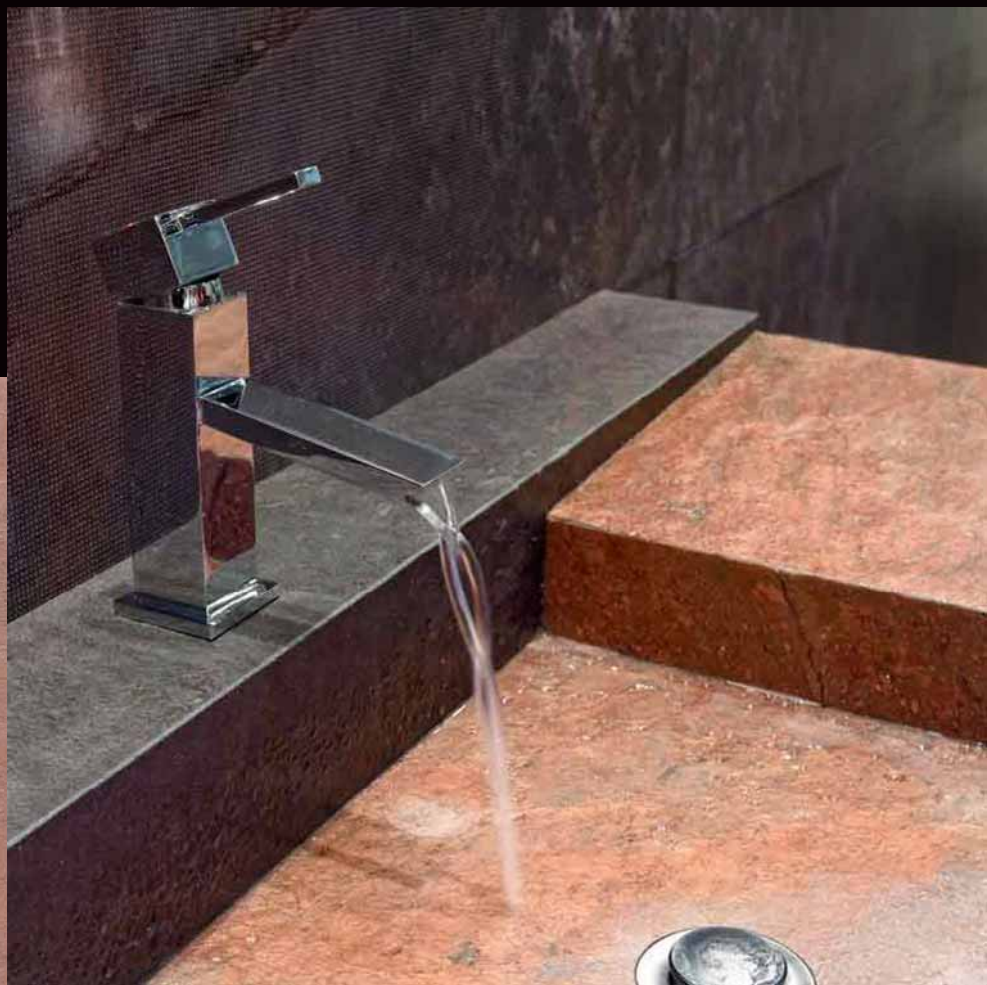




**NSV 905 negro**

## traditional values

With classic good looks and durability, only Decostone can enhance and enrich the traditional home outlook with authority.



**NSV 916 cobre new**





**NSV 915 d.black**

## a perfect blend

The fascinating merger of cultures results in a dazzling array of design, both classic and modern, presented in a range of vibrant, long lasting colors. Decostone is an unbeatable choice for both commercial and domestic use.



**NSV 908 verde gris**





NSV 904 verde

## an answer to every need

Here, every need of customers is answered with a wide range of products in standard sizes. At the same time offering the possibility and capability to adapt each product to the formats and special needs of each individual project.

falling leaves NEW





NSV 908 verde gris



## a natural beauty

Decostone is a natural beauty unlike other decorative natural surface available. Here every single piece is beauty defined. A symbol of everlasting endurance.



NSV 902 - NSV 920 cobre



NSV 912 rustique



for beautiful living

We are proud of the unparalleled selection of Decostone that we offer. You have many of choices to select as per your style.



NSV 904 verde



tan NEW

焼肉 かわらや



it's amazing

Decostone is also used in external applications like building external wall cladding by mounting on shera/bison panel, garden applications like small pavers/planters, wall separators, gates, etc. which are exposed to rain & heat.





silver grey







**burning forest copper**







## Layout & Patterns

Preparation of the area to be covered and the layout of the Decostone sheets is the same as for natural stone or tile. Time spent preparing the work area will pay off immensely. A preliminary dry fit of Decostone allows for arrangements and orientation of individual sheets, patterns, textures, and colors before final placement. It is recommended that each sheet be dry fit exactly where it will be placed on horizontal or vertical surfaces. Numbering the sheets to track relocation before cutting and trimming is recommended and will save time.

## Cutting

Cutting straight lines and curves is best done using long nosed tin snips. Decostone can also be cut with a metal shear, wet saw, or table saw with carbide blade.

## Sealers

It is best to pre-seal Decostone sheets prior to installation. This protects and seals the face from adhesives and grout during installation and handling. Decostone can be sealed with same sealers used for slate, stone tiles, and wood. There are many sealers in the market with various recommended applications. Please try any sealer for the desired luster and penetration required prior to installation.

## Adhesives

Know your adhesives, by understanding the specifics of the adhesive, a good deal of time and cost can be saved. All adhesives should be tested prior to any installation including consideration of moisture and temperature in the planned environment. If the application is outdoors, consideration to thermal expansion needs to be taken into account. Since Decostone is a veneer it must expand and contract with the substrate or delamination may occur. Where adhesive primers are recommended the bond should be tested by the installer before final installation.

## Recommended adhesives

Heavy duty construction adhesive.

Solvent Free FRP adhesive.

Premixed grout and tile adhesive.

Acrylic copolymer based glues and PU construction grade adhesives.

Wood, parquet, and outdoor carpet adhesives. Thick latex or acrylic latex type tile adhesive. Use only where air drying can take place. Not recommended for exterior applications.

Epoxy or Silicone (with primer only).

Construction grade multi-purpose adhesive or polyester resin with filler.

Double-sided foam adhesive (peel & stick).

The back of Decostone may require a filler type adhesive for some applications. For wet environments epoxies resin and water proof adhesives are the best candidate. Contact adhesive are not recommended due to the uneven backing of Decostone. Do not use where the substrate is a moisture barrier when using non-catalyzing (water vapor type) cure adhesive. Adhesive may not adhere properly if applied between non porous materials.

## Hand Rollers

A hand roller is recommended to remove air between the Decostone and substrate. To properly roll out trapped air, start in the middle of a sheet while firmly rolling to the edge. Do not press too hard while rolling as this may cause back-filled areas to push adhesive out and leave an air void. By proper pre-back-filling and using good rolling techniques a solid, hard surface will be achieved.

## Trowels

For best results of adhesive to substrate, a 4,7 mm notched trowel is recommended. Use a straight trowel for back filling of voids. Any bumps in the back surface should be sanded flat prior to back-filling. The back of Decostone may require a filler type adhesive to backfill or level out voids of the natural stone. It is always best to back-fill or back-butter voids or depressions in the material before application to a substrate.



## Tiling, Grouting & Joining

Decostone can be used to create a tiled effect by leaving a grout joint between cut pieces. Sheets may also be butt-joined for the look of a smaller seam. Due to the thin nature of Decostone a 3,2 mm to 6,4 mm grout joint will be produce better results. Test the use of water based epoxy and acrylic premixed grout work well to fill between the cut veneers. During the sponge - off process, the epoxy will seal the surface of the Decostone as weel. These grouts are also available in several colors to match the existing decor. If desired a deeper grout joint can be achieved by removing material just under the grout joint area with a scrapper tool. Modified grout and caulking grout can be used.

## Composition & Variations

Decostone is laminated to a fiberglass and polyester resin substrate. Since Decostone is a natural stone veneer, color and texture variances are not defects within the material, but are inherent to it and part of the natural beauty of quarried materials. Decostone cannot be guaranteed to match dye-lot to dye-lot, so it is recommended that orders take into account future maintenance or re-fit possibilities.

## UV & Temperature

The stone surface of Decostone, like most stone elements, acts as a UV inhibitor and will resist high sun conditions for years. When adhered to a substrate, Decostone will handle thermal contraction and or expansion of most standard construction materials. Decostone will handle both high temperature and freezing without cracking.

SIZE	1220x610 mm Total area 0,75 Sqm 2140x915 mm (Available on request in selected Slates)
TICKNESS	1.5mm ± 1.0mm varies with colours.
TEXTURE	Varies with selection of Slate as well as same family. Being natural in origin, variation in colour, pattern & texture is common.
COLOUR	Majority quartzite slates being metallic multicoloured in origin, colour variation across different panels is common.
WEIGHT	Approx. 2 kg/Sqm ft. = 1,5 kg/sheet of 1220x610 mm
PACKING	Each sheet individually wrapped with paper / pp bag 10 such sheet in 5 ply corrugated master & moisture.
OUTER PACK	Dimension: 1270x635x51 mm = 10 sheets 1220x610 mm = 15 kg
MOISTURE	Stone & FRP back are both stable in water & moisture. It can be easily use to cover moist & weather affected areas.
TEMPERATURE	Decostone is stable from -25 to 80°C. The glue selection has to be according to the temperature exposure
HEAT TRANSFER	Decostone does not enable any sort of heat transfer on either sides.
PRESSURE	Decostone is stable up to normal pressure. It can resist high pressure provided it is not impact from which can damage its surface.
FLEXIBILITY	Decostone is a flexible bendable material & can bend up to 153 mm radius
EXPANDABILITY	Decostone does not expand or contract above 1mm. In total. a slight 1 mm groove in application will be helpful to take care of this.
SURFACE	Decostone is also offered in various surface protection coatings like glossy, matt, enviroment protective antistatic coating etc.
PROTECTION	it is recommended to coat the surface of all external applications.

For any further special query or installation requirement kindly contact [info@decolan.ch](mailto:info@decolan.ch)







*Decolan*

QUALITY  
DECORATIVE  
SURFACES

info@decolan.ch  
[www.decolan.ch](http://www.decolan.ch)

**Headquarters**

CORSO SAN GOTTARDO 32  
CH-6830 CHIASSO (SWITZERLAND)  
ph. +4191 6821862  
fax +4191 6825610

**UK Office**

39 CHAPMAN SQUARE  
SW19 5QT LONDON  
fax +44 20 7900 2652

**USA Office**

WOODLAWN OFFICE PARK  
601 WOODLAWN DRIVE  
SUITE 320  
MARIETTA - GEORGIA 30067-3506  
COBB COUNTY - U.S.A.  
ph. (770) 3216595

